

Uee Series - Portable Hardness Tester Uee916

WARRANTY
3 YEARS



~220V



USB



Software



LCD



Functions & Features

- Multifunction New system, high precision, easy operation
- Customized materials function: able to measure special metal
- With LCD color screen, built-in thermal printer
- Able to calibrate on HL,HRC,HB blocks
- Freely switch to 7 different hardness scales
- Automatically identify 7 types of Impact devices
- Conversion to tensile strength (U.T.S)
- PC Software for data transmission, analysis and report printing
- 3 years warranty and life-long services

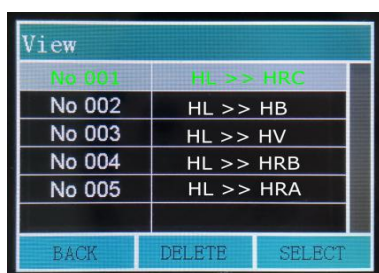
Measuring Materials

- 10 types of metals: steel and cast steel, alloy tool steel, stainless steel, gray cast iron, nodular cast iron, cast aluminum alloy, copper zinc alloys, copper and tin alloy, copper, forged steel
- Customized materials: able to test metal materials which are not included above

Technical Parameters

Model	Uee916
Measuring Range	(170-960)HLD,(17.9-69.5)HRC,(19-683)HB,(80-1042)HV,(30.6-102.6)HS, (59.1-88)HRA, (13.5-101.7)HRB
Hardness parameter	HL, HRC,HRB, HRA,HRV,HS,HB,HV
Accuracy	±6HLD/ ±1.5HRC
Memory	600 groups
PC Connection	Available
Printer	Build-in High-speed Thermal Printer, Width for printer paper:44.5±0.5mm
Battery	Rechargeable Li-ion battery
Operating Temperature	-20℃~+60℃
Dimensions	230×86×46mm
Weight	450g
Standard Configuration	Main unit, Impact Device type D, Calibration block,Power adapter,Small supporting ring, USB cable, Software, Backup accessories(Impact ball*1, Cable*1, Spanner *1), paper of Printer, Cleaning brush,Operation manual,Certificate.
Optional Accessories	Optional Impact Devices(D,DC,DL,D+15,G,C,E), Shaped support rings, Testing blocks,Paper for Printer

Pictures



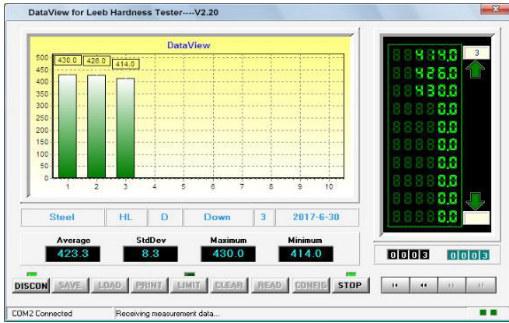
Customized Materials



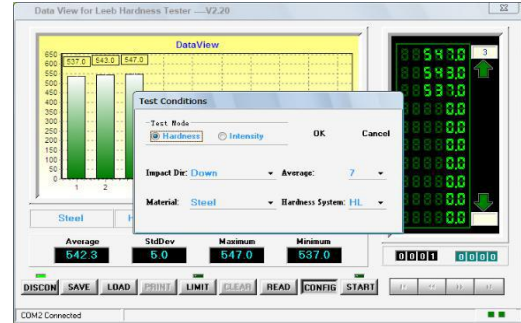
Calibration on HLD/HRC/HB Blocks



Water-proof packing box



Receiving Measurement Data



Select Test Conditions

Optional Accessories



Optional Impact Devices (Probes)



Supporting Rings

Application Fields

- The bearings and other parts, heavy work-pieces, metal material, pressure vessel, failure analysis of turbine generator unit and equipment
- Mechanical or permanent assembly components have been installed, the test space is very narrow, requires the original record regular test results
- Large work-piece within a wide range of more rapid test measurement site

Measuring Conditions

- The weight of measuring object should be more than 2kg.
- The thickness should be more than 10mm.
- The surface roughness should be no more than 1.6 μ m.

Tips: If do not meet the above conditions, the measuring object must be laminated with steel substrate by coupling agents.

Special Supporting Ring (use for different shaped surface)

Model	Notice	Model	Notice
Z10-15	Outside cylinder R10-15	K10-15	Outside sphere R10-15
Z14.5-30	Outside cylinder R14.5-30	K14.5-30	Outside sphere R14.5-30
Z25-50	Outside cylinder R25-50	HK11-13	Inside sphere R11-13
HZ11-13	Inside cylinder R11-13	HK12.5-17	Inside sphere R12.5-17
HZ12.5-17	Inside cylinder R12.5-17	HK16.5-30	Inside sphere R16.5-30
HZ16.5-36	Inside cylinder R16.5-30	UN	Outside cylinder, R10-∞

Measuring Range Table

Material	Hardness	Impact Device (Probe)					
		D/DC	D+15	C	G	E	DL
Steel & cast Steel	HRC	17.1~68.5	19.3~67.9	20.0~69.5		22.4~70.7	20.6~68.2
	HRB	59.6~99.6			47.7~99.9		37.0~99.9
	HRA	59.1~85.8				61.7~88.0	
	HB	80~651	80~638	80~683	90~646	83~663	81~646
	HV	83~976	80~937	80~996		84~1042	80~950
	HS	32.2~99.5	33.3~99.3	31.8~102.1		35.8~102.6	30.6~96.8
Forged Steel	HB	142~651					
Alloy Tool Steel	HRC	17.1~67.1	19.8~68.2	20.0~69.5		22.6~70.2	
	HV	83~976	80~935	80~996		82~1009	
Stainless Steel	HRB	59.6~99.6					
	HB	140~651					
	HV	83~976					
Gray Cast Iron	HRC						
	HB	140~334			92~326		
	HV						
GC Iron	HB	140~387			140~364		
Cast Alum.	HB	30~159		23~210	32~168		
	HRB	23.8~84.6		22.7~85.0	23.8~85.5		
	HV	83.2~648.2					
Copper-Zinc Alloy (Brass)	HB	40~173					
	HRB	13.5~95.3					
Bronze	HB	60~290					
Copper	HB	45~315					